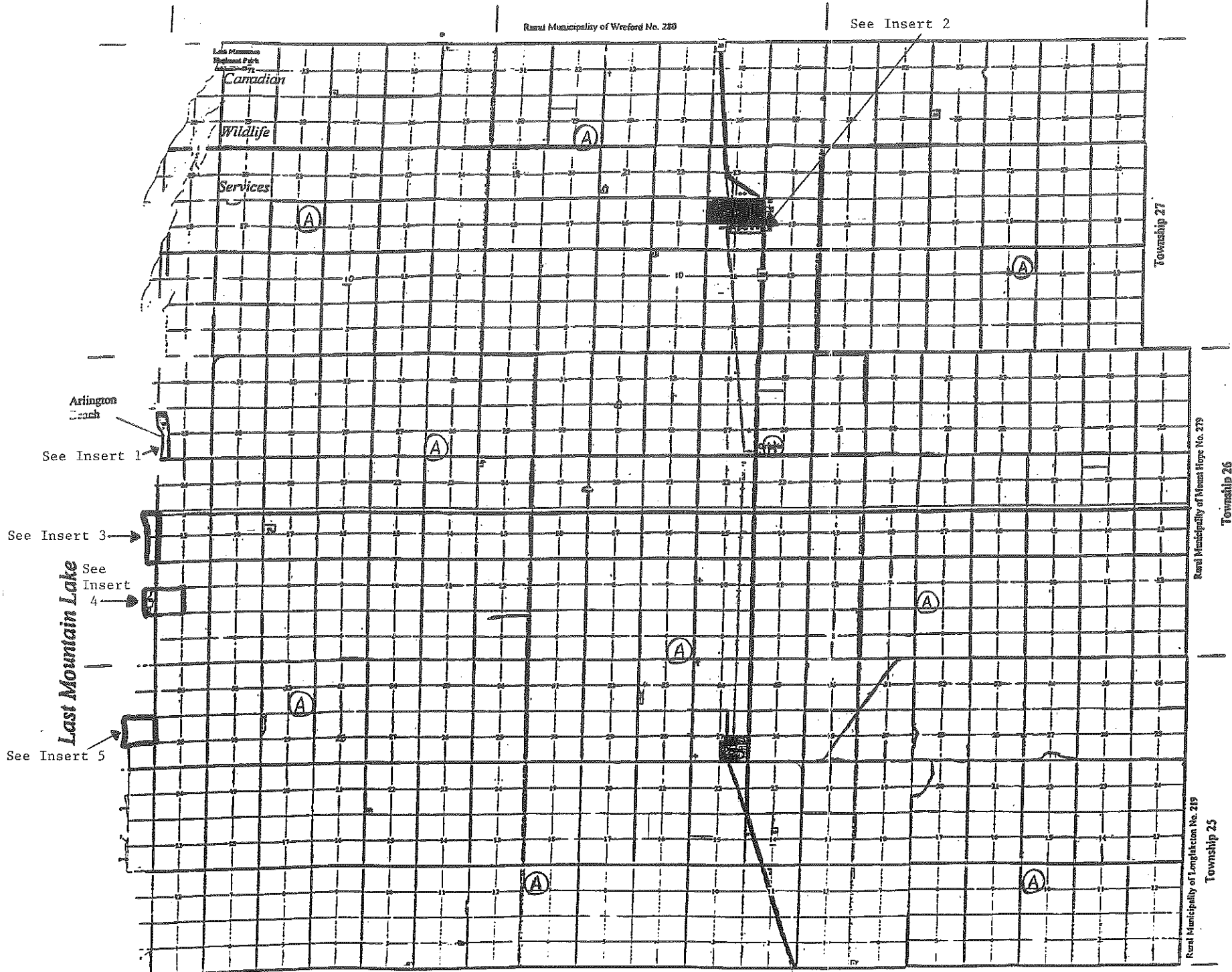


# RURAL MUNICIPALITY OF LAST MOUNTAIN VALLEY No. 250

WEST OF 2nd MERIDIAN

## ZONING DISTRICT MAP

### MAP 1



#### ZONING DISTRICTS

- A AGRICULTURAL
- H HAMLET
- S SUMMER RECREATIONAL
- R RESIDENTIAL

THIS IS THE ZONING DISTRICT MAP REFERRED TO IN BYLAW NO. 219/2001 ADOPTED BY THE RURAL MUNICIPALITY OF LAST MOUNTAIN VALLEY NO. 250.

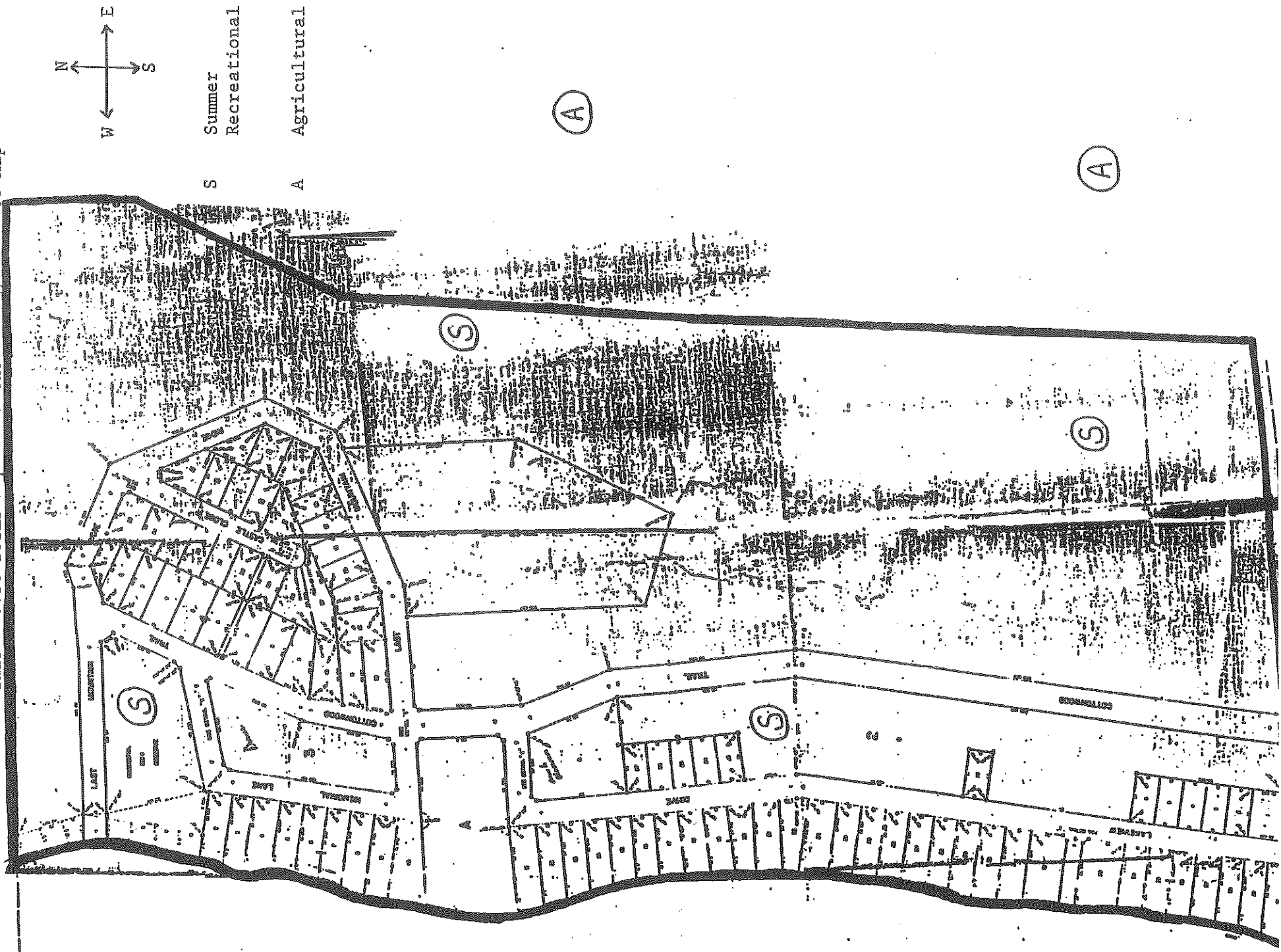
*[Signature]*  
REEVE

*[Signature]*  
ADMINISTRATOR

APPROVED ON THE 14<sup>th</sup> DAY OF March, 2002 A.D.

*[Signature]*

This Insert forms a part of the Zoning District Map



LAKE

MOUNTAIN

LAKE

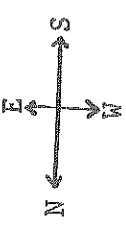
INSERT 2

R. M. OF LAST MOUNTAIN VALLEY

NO. 250

S½ 14-27-22-W2nd

This Insert forms a part of the Zoning District Map.



R Residential

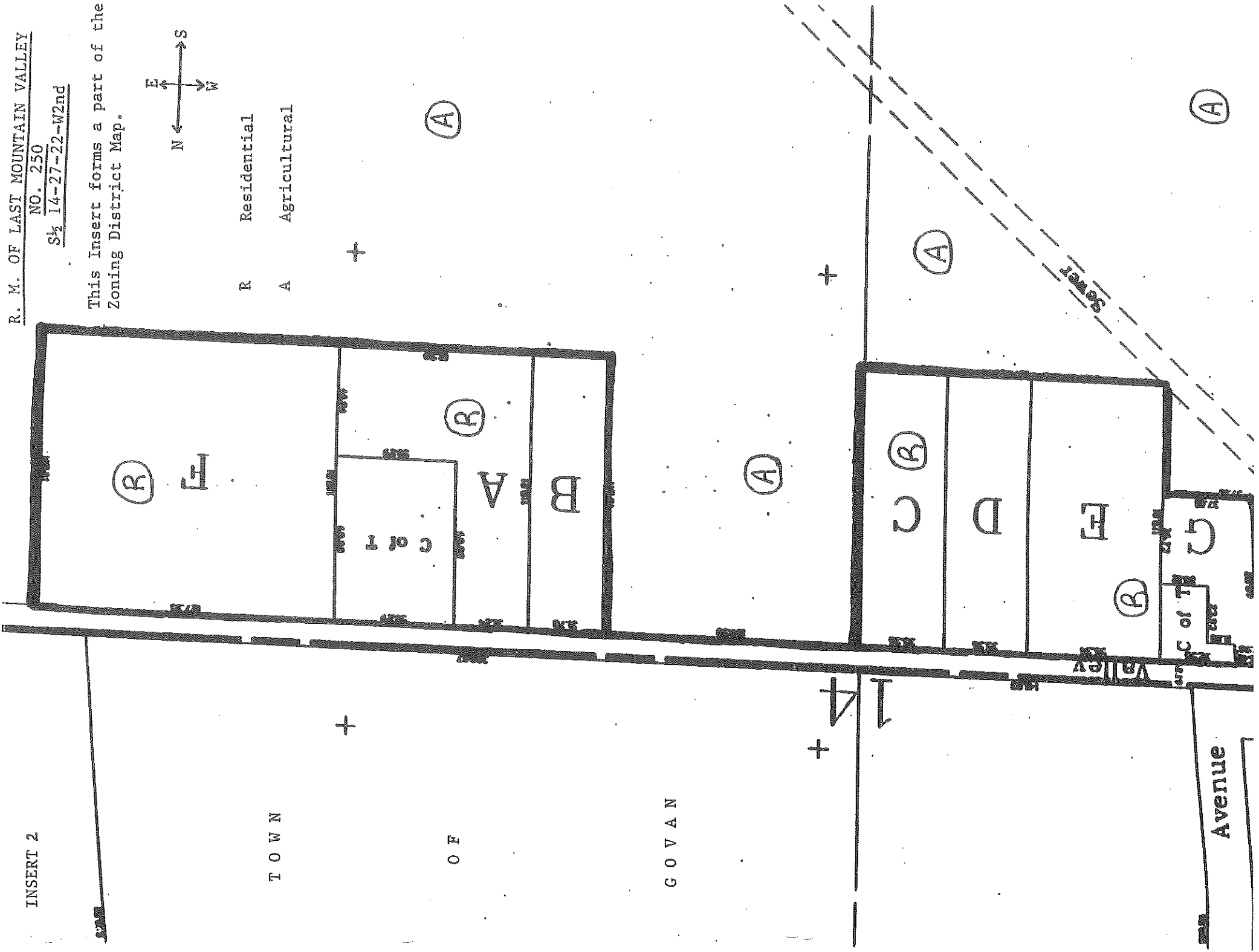
A Agricultural

TOWN

OF

GOVAN

Avenue



(R)

F

C of T

(R)

A

B

(A)

(R)

D

E

(R)

G

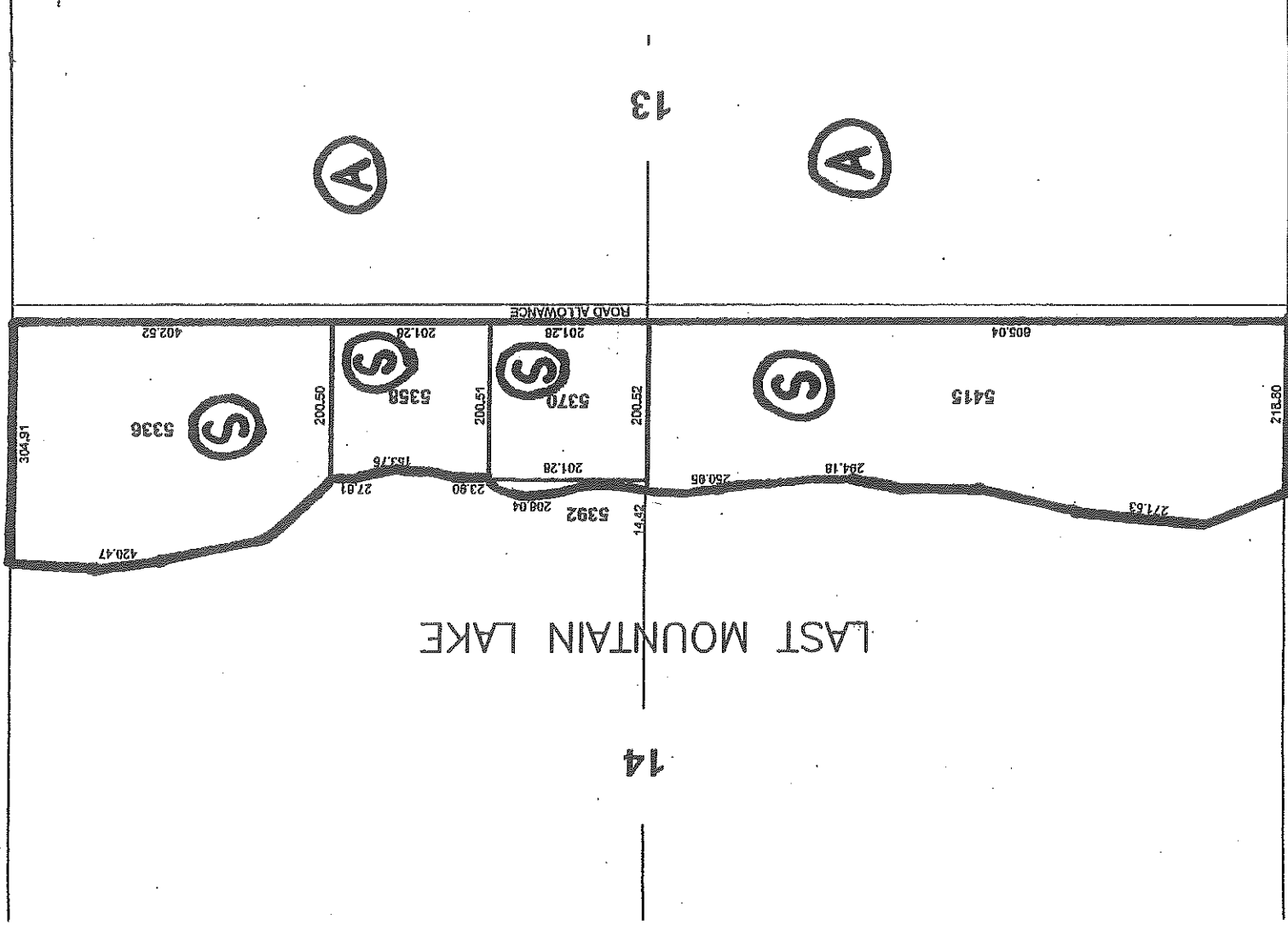
C of T

(A)

(A)

SEWER

This Insert forms a part of the Zoning District Map

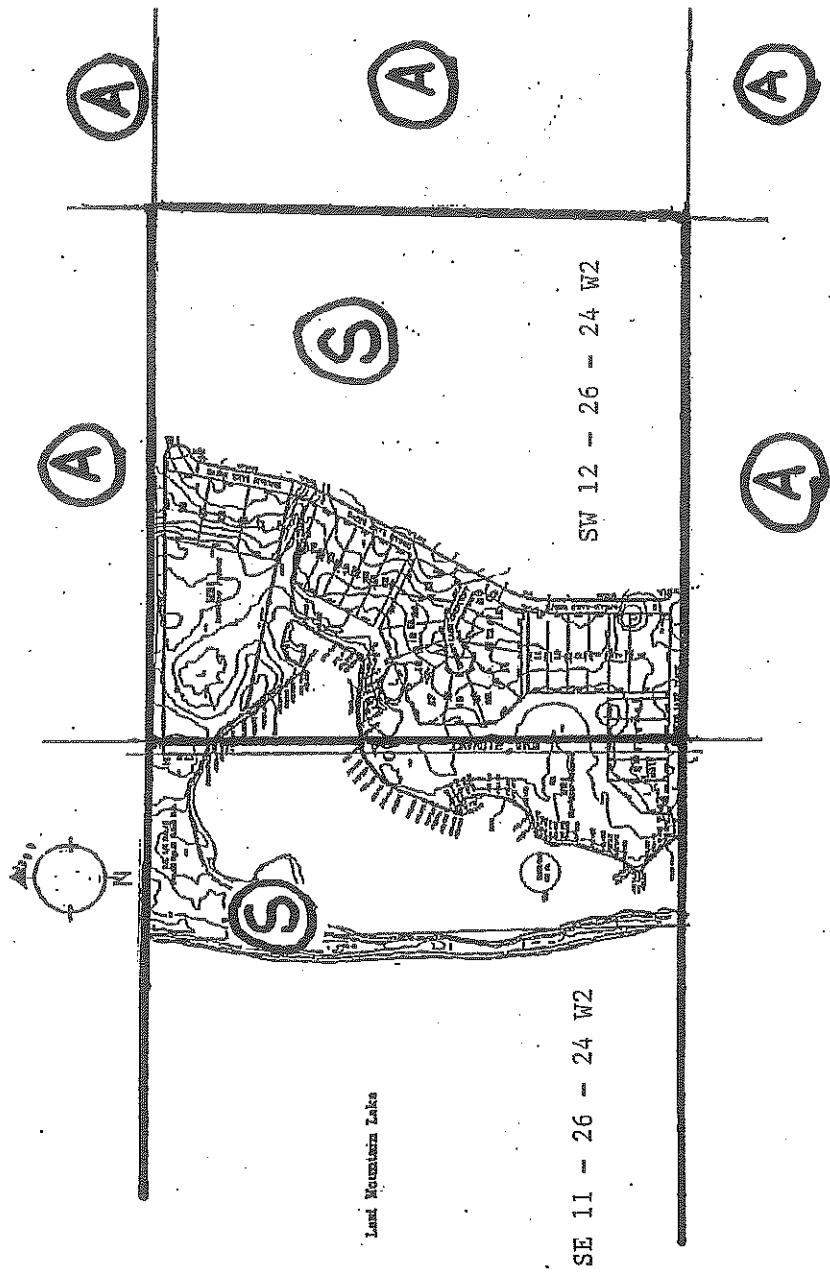


INSERT 4

R.M. OF LAST MOUNTAIN VALLEY NO. 250

SE 11 - 26 - 24 W2 and SW 12 - 26 - 24 W2

This Insert forms a part of the Zoning District Map



INSERT 5

R.M. OF LAST MOUNTAIN VALLEY NO. 250

NE 26 - 25 - 24 W2

This insert forms a part of the Zoning District Map

